



# Docon<sup>®</sup>

## Blood Transfusion

### Devices & Accessories

Where **Medicine**  
meets **Engineering**



**MöllerMedical**

A solution for mobile  
blood donations without  
any compromises

# Docon® 7

The **Docon® 7** represents the systematic evolution of the blood mixing scales that have been developed and produced by Möller Medical for more than 40 years.

## Docon® 7 Standard 00003700

Over the last 13 years the **Docon®** has become firmly established in both national and international markets. In 2014 we introduced the systematically developed **Docon® 7**, a high-end mixer in German quality.

### The emphasis here is on

- | enhanced safety, very robust design, better user friendliness and high efficiency
- | standardized processes and easy, fully extensive documentation
- | technical innovations including: colour display with touchscreen, contactless tube detection, use of antibacterial plastics and much more
- | use of proven platform concepts
- | full network and operational compatibility with the first generation **Docon®**

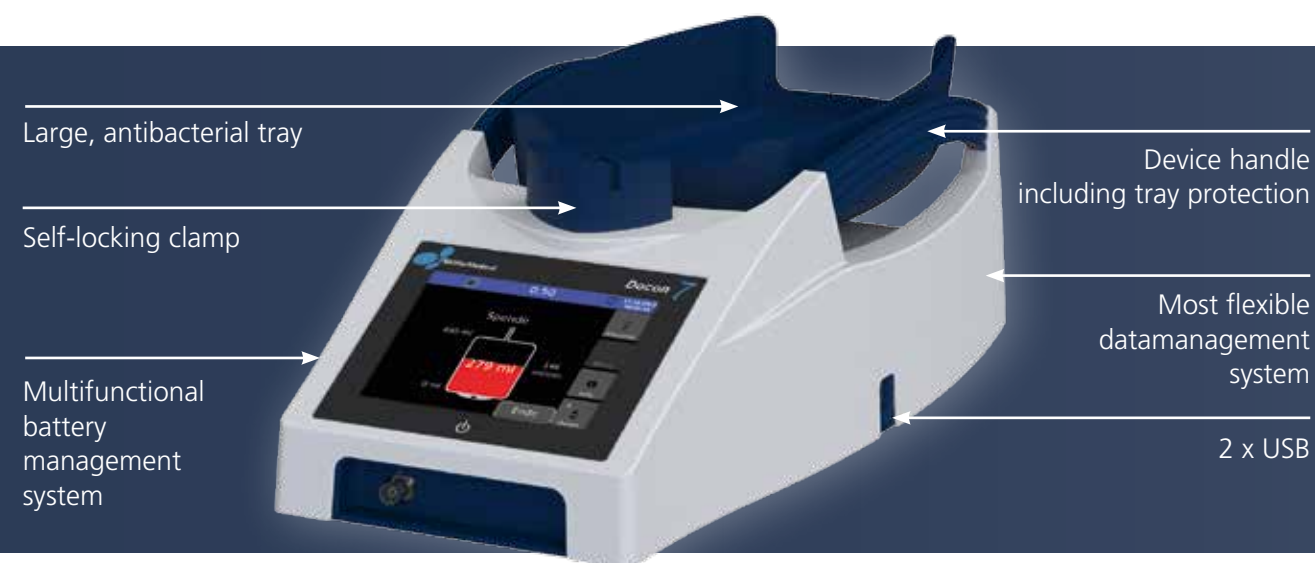
The device is also completely configurable to meet customers' needs.  
The easiest way to transfer data is to use an USB flash drive.

### Key features

- | Colour display with free configurable touchscreen
- | Self-regulating clamp with contactless tube detection
- | Protected weighing tray, magnetic fixation, use of antibacterial plastics
- | Multifunctional battery system using the latest lithium-ion battery technology
- | Integrated charging device
- | Seal option
- | Data management options using USB, LAN and WIFI
- | New PC software for safe data handling and customized device setups which supports bloodbanks with regard to international standards such as ISO and is oriented towards GMP
- | Can be fully integrated into existing **Docon®** networks
- | Back-friendly operation with **Docon® 7** Mobile II
- | User orientated range of accessories
- | Device and software can be adapted to almost any language
- | RFID functionality



## Models and variations of Docon® 7



### Docon® 7 WIFI

For the first time it is possible to integrate the **Docon® 7** in an established network based on TCP/IP. In combination with the software DMS **Docon® 7** the current status will be transmitted to the PC and visualized. The documentation of the donation will be automatically transmitted to the PC.



### Docon® 7 RFID

**Docon® 7** with RFID option can read and write blood bag systems equipped with RFID tags. Passive UHF tags need to be added to the blood bags which are communicating with the **Docon® 7** on a frequency of 13.56 MHz.



### Docon® 7 Internal battery

The **Docon® 7** is equipped with an integrated Li-Ion battery for up to 40 donations per charge. Highly recommended for use at mobile blood donation sites where it is not possible to connect every **Docon® 7** to the mains supply.

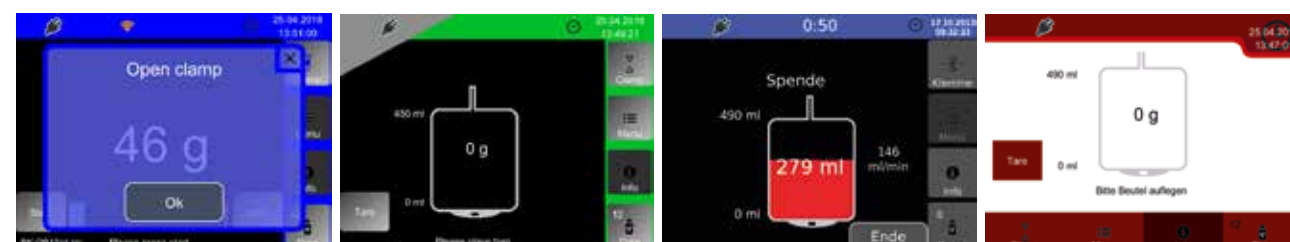


### Docon® 7 Seal

**Docon® 7** seal, the sealing handle for the **Docon® 7**, gives a high degree of protection from contamination during blood donations. Sealing operations can be documented by the **Docon® 7**. The sealing process is visualized by the LED in the sealing handle.



### Examples for colour displays



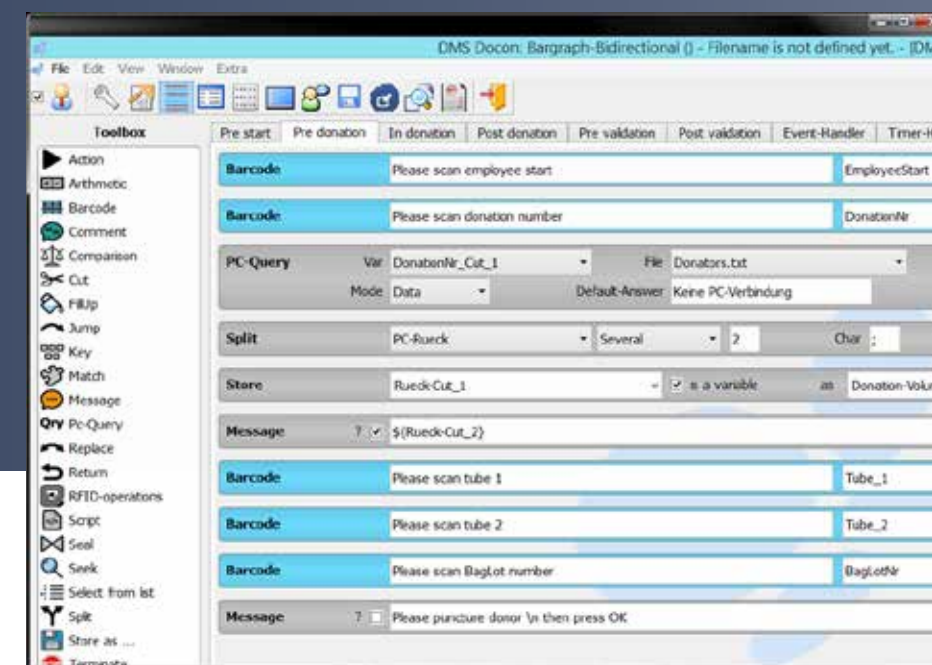
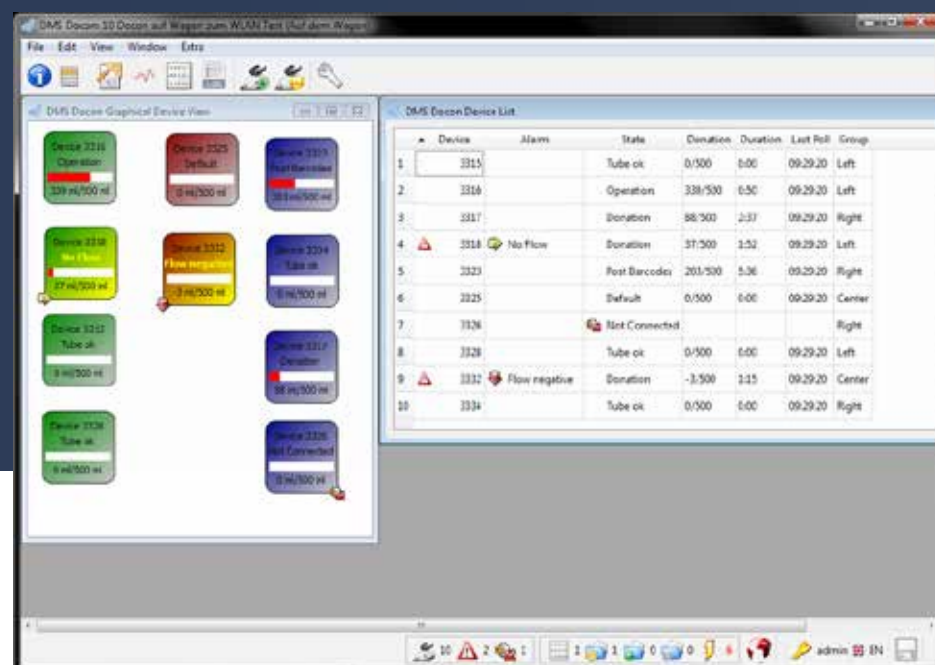
### Technical data

- Device weight: 3 kg
- Dimensions: 458 x 222 x 152 mm
- Voltage: 100 - 240 VAC
- Weighing accuracy: +/- 5 ml
- System weight: 7 - 9 kg
- Sealing time: 2 - 4 seconds



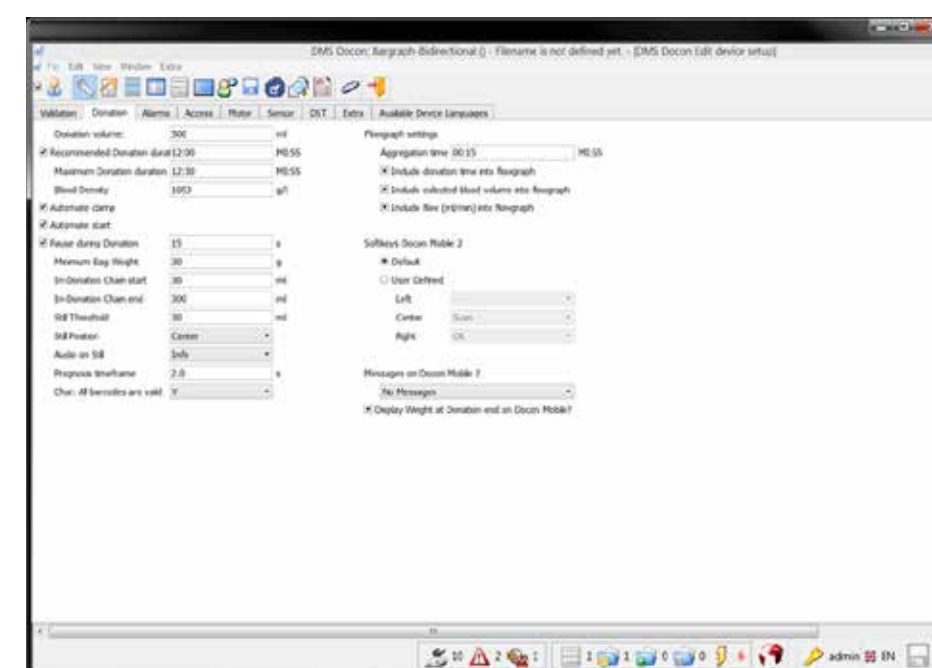
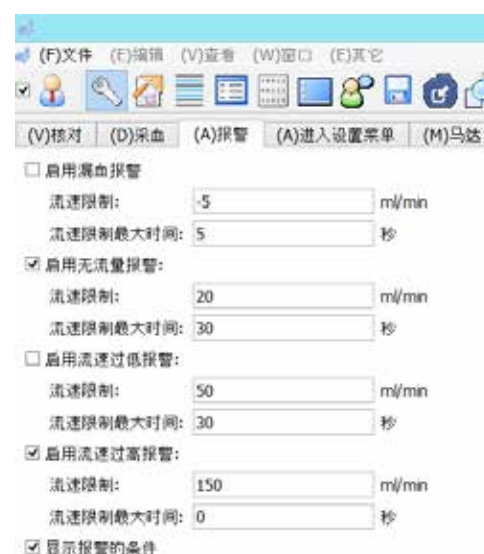
# DMS Docon® Software

- Modern all-in-one software
- Compatible to most available BIS
- Bi-directional data management
- Different user levels



- Safe data handling (supports bloodbanks with regard to international standards such as ISO; is oriented towards GMP)
- User-friendly graphical interface
- Online monitoring of donation status of all devices at once

- Customized operator setups



- Available in all needed languages

- Configuration of device settings/parameters

## Docon® 7 Transport cases



### Model "Basic"

00003818

Basic, low-price solution for a safe transport of the **Docon® 7**.

Dimensions / weight:  
495 x 200 x 380 mm, 2740 g



### Model "Basic +"

00003919

Same as basic model but with additional access pannel at the back for the possibility to re-charge the **Docon® 7** while it remains in the case (only for devices with internal battery).

Dimensions / weight:  
495 x 200 x 380 mm, 2740 g



### Model "Advanced"

00003862

Advanced, mid-price solution for the transport of the **Docon® 7**. Additional possibility to put the **Docon® 7** on top of the two parts of the case so that it is in the correct operating position during the donation process.

All **Docon® 7** accessories can be kept safely in a separate storage compartment.

Dimensions / weight:  
570 x 250 x 335 mm, 2980 g



### Model "Professional"

00003673

The transport case model "Professional" provides the best possible protection for the **Docon® 7** during the transport. It is also used to ensure the device is in the correct operating position during the donation procedure.

All **Docon® 7** accessories can be kept safely in a separate storage compartment. The batteries are stored in exchange slots in the case and can be freely exchanged during operation.

Dimensions / weight:  
599 x 280 x 325 mm, 5110 g



## Docon® 7 Accessories



**Docon® 7 Mobile II**  
00003739

Back-friendly operation is the key feature of this device. As well as its primary function of scanning barcodes, the **Docon® 7** Mobile can also operate the **Docon® 7** by completely using the scanner keypad. The current status of the donation is also shown on the colour display and signal statuses are shown with flashing super bright LEDs. Laser scanning technology means that illegible barcodes are now a thing of the past.



**Docon® 7 Barcodereader (basic)** 00003916

This basic barcode reader with its extra large visual field and the very long scanning line makes the reading of long barcodes from a short distance very simple. The scanning is very easy and intuitive for the user thanks to the sharp and clearly visible scanning line. Despite its small and light design this barcode reader is very robust and offers a remote management functionality as well as the host download application.



**Docon® 7 Status Indicator**  
00003717

If you do not have a **Docon® 7** Mobile available to view signal statuses from a distance, the status indicator is your alternative. It can be easily attached to the donor chair or the chairside table in an elevated position.



**Docon® 7 Table and Accessories**  
00003672 | 00003551 | 00002901 | 00003554 |  
00003555 | 00003556 | 00003557

The table completes the range of accessories. It provides a tray area for donation equipment. The sealing handle and **Docon® 7** Mobile can be safely stored in the corresponding holders.

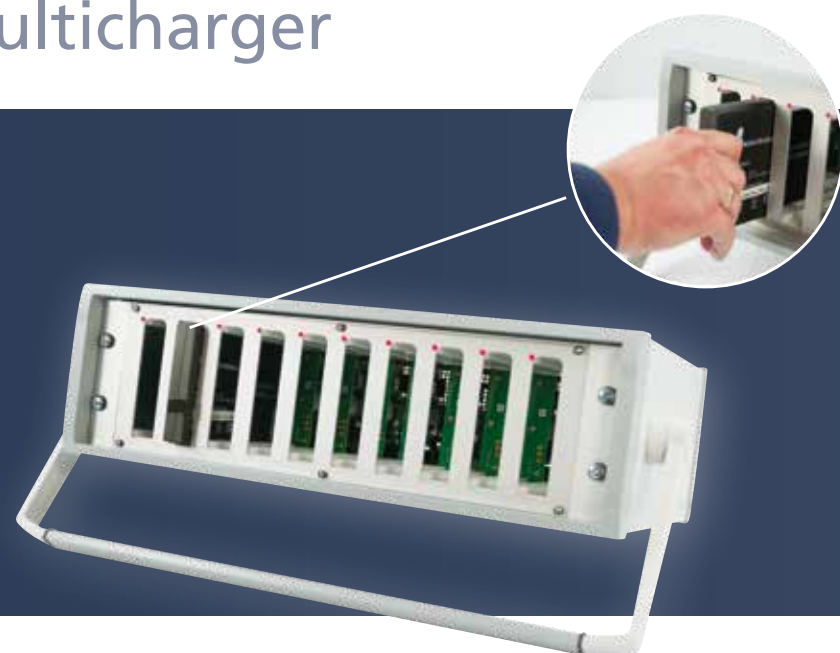


**Docon® 7 Tube stripper**  
00000214

Developed for the stripping out or pinching off of tubes in the blood sector preparation, after the blood donation or other working processes. Blood within the tube segment is stripped into a collecting bag. Ergonomical design for an easy and safe stripping. Easy to clean, light-weight and sturdy.



## Docon® 7 Multicharger



### Docon® 7 Multicharger

00003841

- | Charger for up to 10 external batteries 93005614
- | Fast re-charging time
- | Status LED for charging conditions

## Docon® 7 External Battery



### Docon® 7 External Battery

93005614

- | Based on the latest lithium-ion technology
- | One or two batteries can be used in the **Docon® 7**
- | If both batteries are used at once, up to 100 donations are possible per battery charge
- | Load status indicator

# Docon® SealM



## Docon® SealM

consisting of sealing generator, sealing handle, transportation case and battery charger 00003681

## Key features

- | Light, robust and handy mobile sealing unit
- | Ergonomically shaped sealing handle including spray protection (also suitable for small hands)
- | Can be operated using minimal manual force
- | Easy to clean
- | Latest lithium-ion battery technology for up to 2000 seals per battery charge
- | Reliable system for sealing directly at the donor
- | Automatically regulated sealing time depending on tube thickness

## Technical data

- | Device weight: 950 g
- | Handle weight: 300 g
- | Dimensions: 185 x 94 x 61 mm
- | Voltage: 100 - 240 VAC
- | PVC tube spec.: 4 - 6 mm
- | Sealing time: 2 - 5 seconds
- | Seals in series: > 150
- | Seals per charge: 2000
- | Battery: lithium-ion

## Portable Tube Sealer

### High Performance Sealing with Docon SealM

The **Docon®** Seal M is an automated sealing unit to seal PVC tubes, particularly the blood removal tube directly attached to the donor. This ensures an increased level of safety when sealing the tube. Its handy, robust and light construction combined with a long battery charge life provide the best conditions for everyday use in production and further processing of stored blood.

Different tube diameters and wall thicknesses can be sealed.

The sealing time is automatically adjusted to the tubes specified. The active sealing process is indicated by an LED on the sealing handle.

## Accessories

### Docon® SealM Shoulder Bag

00003914

The shoulder bag enables the user to move freely around and to take the device with him with both hands still free. It can remain in the bag during the re-charging process.





## Docon® Seal

## Stationary Tube Sealer



The **Docon®** Seal combines the benefits of a flexible handgun driven sealing unit with the continuous power supply of a fixed table sealer.

It has been designed analogue to the **Docon®** Seal M with integrated power supply, mainly for the use in blood banks and other applications where it is not necessary to have a mobile battery-operated sealer.

### Key features

- | Up to 300 seals in series
- | Light, robust and handy mobile sealing unit
- | Ergonomically shaped sealing handle including spray protection (also suitable for small hands)
- | Can be operated using minimal manual force
- | Easy to clean
- | Reliable system for sealing directly at the donor
- | Automatically regulated sealing time depending on tube thickness

### Technical data

- | Device weight: 900 g
- | Handle weight: 300 g
- | Dimensions: 185 x 94 x 61mm
- | Voltage: 100 - 240 VAC
- | PVC tube spec.: 4 - 6 mm
- | Sealing time: 2 - 5 seconds
- | Seals in series: up to 300



### Docon® Seal

consisting of Sealing generator, sealing handle, transportation case and AC power cable

## Models and variations of Docon® 7

Name	Description	Article No.
<b>Docon® 7</b>	Basic model	00003700
<b>Add-ons</b>		
WIFI Option	Integrated WIFI technology	00003676
Seal Option	Integrated sealing technology; Consisting of sealing generator and sealing handle	00003674
Internal battery option	Integrated Li-Ion battery	00003803
RFID option	Integrated RFID technology	92016092

## Docon Seal series

Name	Description	Article No.
Docon SealM	Mobile tube sealer	00003861
Docon Seal	Tube sealer for stationary use	00003900
Docon SealM Shoulder Bag	Easy and safe transport of the Docon SealM	00003914

## Docon® 7 Accessories

Name	Description	Article No.
<b>Docon® 7</b> Table	Table for <b>Docon® 7</b> incl. fixation	00003672
<b>Docon® 7</b> Tube Holder	Holder for sealing handle for <b>Docon® 7</b> table	00003551
<b>Docon® 7</b> Mobile II LSC	Mobile scanning and control unit for <b>Docon® 7</b>	00003739
<b>Docon® 7</b> Scanner cradle	Scanner cradle with table fixation	00002901
<b>Docon® 7</b> Scanner cradle	Scanner cradle with swan neck, short	00003055
<b>Docon® 7</b> Scanner cradle	Scanner cradle with swan neck, long	00003054
<b>Docon® 7</b> Scanner cradle	Scanner cradle, straight, pluggable	00003057
<b>Docon® 7</b> Scanner cradle	Scanner cradle with foot	00003056
<b>Docon® 7</b> Status LED	Status LED with clamp and USB cable	00003717
<b>Docon® 7</b> External Battery	External battery for <b>Docon® 7</b>	93005614
<b>Docon® 7</b> Transportation case	Basic	00003818
<b>Docon® 7</b> Transportation case	Basic +	00003919
<b>Docon® 7</b> Transportation case	Advanced	00003862
<b>Docon® 7</b> Transportation case	Professional	00003673
<b>Docon® 7</b> Multicharger	Re-Charging possibility for 10 external batteries at the same time.	00003841
<b>Docon® 7</b> Tube Stripper	Stripper for blood tubes	00000214

## ■ COMPANY

Möller Medical was founded in 1949 and sells products, including the ones in this brochure, under its own brand around the world. Möller Medical is also active within the demanding OEM business; the company develops components, systems and finished devices for human medicine, in vitro diagnostics (IVD) and precision engineering.

Customers include many renowned medical devices/IVD companies. Our products are all manufactured in-house. **Docon® 7** was also developed, programmed and manufactured in-house.

Möller Medical is certified acc. to EN ISO 13485, EN ISO 9001 and MDSAP. The medical products shown here are CE-compliant in accordance with the EU Directive 93/42/EEC and FDA listed.



**Möller Medical GmbH**  
Wasserkuppenstraße 29-31  
36043 Fulda, Germany  
[www.moeller-medical.com](http://www.moeller-medical.com)

