

## BENCHTOP CENTRIFUGES

# — ROTINA 420 | 420 R

## MANY SOLUTIONS - ONE ROTOR

This compact benchtop centrifuge has been developed for large sample volumes. It has a maximum capacity of 4 x 600 ml bottles, 140 blood tubes, 16 microtiter plates or 52 x 15 ml conical tubes, all on a single cost-effective rotor.

This unit is available with refrigeration and a temperature range from -20 °C to +40 °C (ROTINA 420 R).



## — HIGHLIGHTS

- RPM: 50 - 15,000 min<sup>-1</sup>  
Adjustable in increments of 10
- RCF: 50 - 24,400  
Adjustable in steps of 1
- max. capacity: 4 x 600 ml
- High-performance with first-class equipment
- choice of 5 rotors
- IVDR-conform according to regulation (EU) 2017/746
- max. noise level of 51 dB(A) with rotor 4790-A
- easy operation with keypad and control knob
- 98 program memories for more individuality
- 9 individual acceleration and deceleration stages
- model 420 R coolable from -20 to +40 °C with pre-cooling function

## — FEATURES

- metal housing and lid
- viewing port in the lid
- powered one-hand lid lock
- lid dropping protection
- emergency lid lock release
- stainless steel chamber
- automatic rotor recognition
- brushless drive
- error display
- display in °C and °F possible
- imbalance monitoring and switch-off
- backlit panel with actual values of all parameters
- Auditory message after completion of the centrifugation run

## TECHNICAL DATA

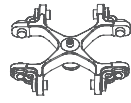
	<b>ROTINA 420</b> non-refrigerated	<b>ROTINA 420 R</b> refrigerated
voltage *)	200–240 V 1 ~	200–240 V 1 ~
frequency	50–60 Hz	50 Hz
consumption	870 VA	1,600 VA
emission, immunity	EN/IEC 61326-1, class B	EN/IEC 61326-1, class B
max. capacity	4 x 600 ml	4 x 600 ml
max. RPM	15,000 min <sup>-1</sup>	15,000 min <sup>-1</sup>
max. RCF	24,400	24,400
running time	1 – 99 h: 59 min: 59 s, ∞ continuous run, short cycle mode	1 – 99 h: 59 min: 59 s, ∞ continuous run, short cycle mode
dimensions (WxDxH)	506 x 650 x 423 mm	713 x 654 x 423 mm
weight	approx. 75 kg	approx. 108 kg
noise level	51 dB (A) with rotor 4790-A	50 dB (A) with rotor 4790-A
temperature control, infinitely variable	-	from -20 to +40 °C
<b>Cat. No.</b>	<b>4701</b>	<b>4706</b>
100–127 V 1 ~ / 50–60 Hz *)	4701-01	4706-01
consumption	900 VA	1,850 VA
emission, immunity	FCC class B	FCC class B
weight	approx. 84 kg	approx. 117 kg

\*) Other voltages on request.

## AVAILABLE ROTORS

<b>SWING-OUT ROTORS</b>		angle	max. RPM	max. capacity	Cat. No.	page
	swing-out rotor, 4-place	90°	4,800 min <sup>-1</sup>	4x600 ml	<b>4784-A</b>	3
	swing-out rotor, 4-place	90°	4,000 min <sup>-1</sup>	4x290 ml	<b>4753</b>	4
<b>ANGLE ROTORS</b>						
	angle rotor, 4-place	25°	9,500 min <sup>-1</sup>	4x250 ml	<b>4795</b>	6
	angle rotor, 6-place	45°	11,000 min <sup>-1</sup>	6x94 ml	<b>4794</b>	7
	angle rotor, 30-place	45°	15,000 min <sup>-1</sup>	30x2 ml	<b>4790-A</b>	8

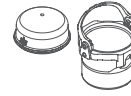
## SWING-OUT ROTOR, 4-PLACE | 4784-A



<b>Rotor</b>	
max. RPM   max. RCF	4,800 min <sup>-1</sup>   4,740
max. capacity	4x600 ml
run-up   run-down, braked in sec	54   38
angle   max. noise level	90°   56 dB (A)
temperature in °C <sup>1)</sup>	+4
<b>Cat. No.</b>	<b>4784-A</b>



<b>Bucket with clamp lock</b>	
lid bioseal <sup>5)</sup>	4783
<b>Cat. No.</b>	<b>4780</b>



<b>Bucket without clamp lock<sup>14)</sup></b>	
<b>Cat. No.</b>	<b>4785</b>



<b>Vessels</b>																
capacity in ml	1.5	2.0	3	4	4	5	6	7	15	25	50	94	100	100	250	
Ø x L in mm	11 x 38	11 x 38	10 x 60	10 x 88	12 x 60	12 x 75	12 x 82	12 x 100	17 x 100	24 x 100	34 x 100	38 x 102	40 x 115	44 x 100	65 x 115	
max. RCF <sup>2)</sup>	4,585	4,585	4,585	4,585	4,585	4,585	4,585	4,585	4,585	4,585	4,559	4,534	4,534	4,534	4,534	
radius in mm	178	178	178	178	178	178	178	178	178	178	177	176	176	176	176	
<b>Cat. No.</b>	<b>microliter tubes</b>			<b>tubes<sup>2)</sup></b>												



<b>Adapter</b>															
boring Ø x L in mm	11.2x38	11.2x38	11.2x54	11.2x54	13.4x55	13.4x55	13.4x55	13.4x55	17.5x62	26.5x69	36x77	42x76.5	42x76.5	46x76.5	66x97
vessels per rotor	96	96	140	140	104	104	104	104	72	28	16	12	12	8	4
<b>Cat. No.</b>	<b>4773</b>	<b>4773</b>	<b>4761</b>	<b>4761</b>	<b>4762A</b>	<b>4762A</b>	<b>4762A</b>	<b>4762A</b>	<b>4763A</b>	<b>4764</b>	<b>4765</b>	<b>4766</b>	<b>4766</b>	<b>4767</b>	<b>4768</b>

<b>Vessels</b>															
capacity in ml	1.1-1.4	2.6-3.4	4-5.5	4.5-5	4.9	7.5-8.2	9-10	1.6-7	1.6-7	4-7	8	8.5-10	15	50	12
Ø x L in mm	8 x 66	13 x 65	15 x 75	11 x 92	13 x 90	15 x 92	16 x 92	13 x 75	13 x 100	16 x 75	16 x 125	16 x 100	17 x 120	29 x 115	17 x 100
max. RCF <sup>2)</sup>	4,585	4,585	4,585	4,585	4,585	4,585	4,585	4,720	4,720	4,585	4,585	4,585	4,740	4,688	4,688
radius in mm	178	178	178	178	178	178	178	178	178	178	178	178	184	182	182
<b>Cat. No.</b>	<b>blood collection / urine vessels</b>											-	<b>tubes with screw cap</b>		




<b>Adapter</b>															
boring Ø x L in mm	11.2x54	13.4x55	17.5x62	11.2x54	13.4x55	17.5x62	17.5x62	13.4x54	13.7x54	17.5x62	17.5x62	17.5x62	17x84	30x82.5	17.2x58.5
vessels per rotor	140	104	72	140	104	72	72	104	84	72	24	72	52	20	56
<b>Cat. No.</b>	<b>4761</b>	<b>4762A</b>	<b>4763A</b>	<b>4761</b>	<b>4762A</b>	<b>4763A</b>	<b>4763A</b>	<b>4762A</b>	<b>4775A</b>	<b>4763A</b>	<b>4763A</b>	<b>4763A</b>	<b>4769A</b>	<b>4770A</b>	<b>4774A</b>

<b>Vessels</b>															
capacity in ml	25-30	50	10	30	50	85	94	175	175	200	225	250	400	400	600
Ø x L in mm	25x90/110	29x115	16x80	26x95	29x107	38x106	38x102	61 x 118	62 x 144	60 x 130	61 x 137	62 x 122	81 x 136	84x134	93x134
max. RCF <sup>2)</sup>	4,585	4,688	4,585	4,585	4,688	4,534	4,534	4,740	4,740	4,740	4,740	4,740	4,740	4,740	4,740
radius in mm	178	182	178	178	182	176	176	184	184	184	184	184	184	184	184
<b>Cat. No.</b>	<b>tubes with screw cap</b>							<b>Falcon</b>	<b>Nalgene</b>	<b>Nunc<sup>3,6)</sup></b>	<b>Falcon</b>	<b>5127<sup>24)</sup></b>	<b>-<sup>24)</sup></b>	<b>-<sup>24)</sup></b>	<b>0551<sup>24)</sup></b>



<b>Adapter</b>														
boring Ø x L in mm	26.5x69	30x82.5	17.5x62	26.5x69	30x82.5	42x76.5	42x76.5	61x105	61.5x110	61.5x110	61x105	62x100	85x100	85x100
vessels per rotor	28	20	72	28	20	12	12	4	4	4	4	4	4	4
<b>Cat. No.</b>	<b>4764</b>	<b>4770A<sup>4)</sup></b>	<b>4763A</b>	<b>4764</b>	<b>4770A<sup>4)</sup></b>	<b>4766</b>	<b>4766</b>	<b>4776</b>	<b>4777</b>	<b>4777</b>	<b>4776</b>	<b>4771</b>	<b>4772</b>	<b>4772</b>

## SWING-OUT ROTOR, 4-PLACE | 4753



<b>Rotor</b>	
max. RPM   max. RCF	4,000 min <sup>1</sup>   2,898
max. capacity	4 x 100 ml
run-up   run-down, braked in sec	18   16
angle   max. noise level	90°   58 dB (A)
temperature in °C <sup>1)</sup>	-1
<b>Cat. No.</b>	<b>4753</b>



<b>Bucket</b>	
lid	5053
<b>Cat. No.</b>	<b>5051</b>



<b>Vessels</b>														
capacity in ml	1.5	2	1.5	2	3	5	6	7	9	15	25	50	100	100
Ø x L in mm	11 x 38	11 x 38	11 x 38	11 x 38	10 x 60	12 x 75	12 x 82	12 x 100	14 x 100	17 x 100	24 x 100	34 x 100	44 x 100	40 x 115
max. RCF <sup>2)</sup>	top / bottom	1,950 / 2,826	1,950 / 2,826	2,826	2,826	2,737	2,773	2,773	2,755	2,773	2,755	2,755	2,755	2,755
radius in mm	top / bottom	109 / 158	109 / 158	158	158	153	155	155	154	155	154	154	154	154
<b>Cat. No.</b>	<b>microliter tubes</b>				<b>tubes<sup>2)</sup></b>									

<b>Adapter</b>															
boring Ø x L in mm	12.5 x 37	12.5 x 37	11.5 x 50	11.5 x 50	11 x 44	12.5 x 39.5	12.5 x 39.5	12.5 x 82.5	16 x 50	17.5 x 82.5	26 x 82.5	36 x 82.5	45.5 x 82.5	42 x 86	
vessels per rotor	160	160	64	64	80	80	80	80	48	48	20	8	4	4	
<b>Cat. No.</b>	<b>5257</b>	<b>5257</b>	<b>5281</b>	<b>5281</b>	<b>5267</b>	<b>5227</b>	<b>5227</b>	<b>5227</b>	<b>5247<sup>15)</sup></b>	<b>5264</b>	<b>5248<sup>15)</sup></b>	<b>5242</b>	<b>5243</b>	<b>5262</b>	<b>5249</b>

<b>Vessels</b>													
capacity in ml	1.1-1.4	2.6-3.4	2.7-3	4-5.5	4.5-5	4.9	7.5-8.2	9-10	10	1.6-5	4-7	8.5-10	1-8
Ø x L in mm	8 x 66	13 x 65	11 x 66	15 x 75	11 x 92	13 x 90	15 x 92	16 x 92	15 x 102	13 x 75	16 x 75	16 x 100	simple / multiple
max. RCF <sup>2)</sup>	2,737	2,808	2,773	2,773	2,773	2,808	2,773	2,755	2,755	2,808	2,773	2,755	1,735 / 2,737
radius in mm	153	157	155	155	155	157	155	154	154	157	155	154	97 / 153
<b>Cat. No.</b>	<b>blood collection / urine vessels</b>								<b>tubes with screw cap</b>			<b>cyto chambers</b>	

<b>Adapter</b>													
boring Ø x L in mm	11 x 41.5	13.5 x 52	12.5 x 37	16 x 50	12.5 x 37	13.5 x 52	16 x 50	17.6 x 82.5	17.6 x 82.5	13.5 x 52	16 x 50	17.5 x 82.5	-
vessels per rotor	80	48	80	48	80	48	48	44	44	48	48	48	8
<b>Cat. No.</b>	<b>5267</b>	<b>5268</b>	<b>5227</b>	<b>5264</b>	<b>5227</b>	<b>5268</b>	<b>5264</b>	<b>5258</b>	<b>5258</b>	<b>5268</b>	<b>5264</b>	<b>5248</b>	<b>5280</b>


<b>Vessels</b>						
capacity in ml	15	30	50	12	30	50
Ø x L in mm	17 x 120	25 x 110	29 x 115	17 x 100	25 x 110	29 x 115
max. RCF <sup>2)</sup>	2,898	2,755	2,826	2,898	2,755	2,755
radius in mm	162	154	158	162	154	154
<b>Cat. No.</b>	<b>tubes with screw cap</b>					

<b>Adapter</b>						
boring Ø x L in mm	17 x 90	26 x 82.5	30 x 90	17 x 90	26 x 82.5	36 x 82.5
vessels per rotor	28	20	8	28	20	8
<b>Cat. No.</b>	<b>6306</b>	<b>5266</b>	<b>5259</b>	<b>6306</b>	<b>5266</b>	<b>5243</b>

**CYTO** Cyto system available for this model. More information on page 180

- Lowest attainable temperature in precooled refrigerated centrifuges at max. speed. Lower temperatures can be attained by reducing the speed.
- Please note that the RCF values indicated refer only to rotor performance. The max. permissible RCF of tubes used should be verified with the individual manufacturers. The max. RCF for glass tubes annotated with footnote 2) is 4,000.
- When using these tubes, carrier 4780 cannot be closed with lid 4783.
- Please remove the spacer.
- Tested by the TÜV in conformity with DIN EN 61010, section 2-020.
- The screw cap for tube No. 0538 is available with Cat. No. 0539. Dimensions with cap 38 x 110 mm.
- With the E3905 add-on kit and the 4783 lid, the 4785 carrier can be converted at a later time to a 4780 carrier with single-hand clamp lock.
- Adapter must be loaded as illustrated.
- At temperatures of over +40 °C and / or when not filled to capacity, bottles may warp during centrifugation.
- Suitable for blood collection systems with a lid larger than 17 mm in diameter.

## SWING-OUT ROTOR, 4-PLACE | 4753



<b>Rotor</b>	
max. RPM   max. RCF	4,000 min <sup>1)</sup>   3,095
max. capacity	4 x 250 ml
run-up   run-down, braked in sec	18   16
angle   max. noise level	90°   58 dB (A)
temperature in °C <sup>1)</sup>	-1
<b>Cat. No.</b>	<b>4753</b>



<b>Bucket</b>	
lid bioseal <sup>5)</sup>	5093
<b>Cat. No.</b>	<b>5092</b>



<b>Vessels</b>															
capacity in ml	5	6	7	15	25	50	100	100	250	1.1-1.4	2.6-2.9	2.7-3	4-4.5	4.5-5	4.9
Ø x L in mm	12x75	12x82	12x100	17x100	24x100	34x100	44x100	40x115	65x115	8 x 66	13 x 65	11x66	15x75	11x92	13x90
max. RCF <sup>2)</sup>	3,005	3,005	3,005	2,952	2,898	2,952	2,952	2,952	3,095	2,540	2,540	2,540	2,952	3,005	2,952
radius in mm	168	168	168	165	162	165	165	165	173	142	142	142	165	168	165
<b>Cat. No.</b>	<b>tubes<sup>2)</sup></b>									<b>blood collection / urine vessels</b>					

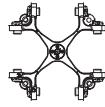
<b>Adapter</b>															
boring Ø x L in mm	12.8x42	12.8x42	13.2x79.5	17.5x56.7	25.5x75	35.5x77.5	45.5x85	42x76.5	66x103	12.8x54.5	12.8x54.5	12.8x54.5	17.5x56.7	13.2x79.5	13.5x56.7
vessels per rotor	48	48	48	32	16	4	4	4	4	48	48	48	32	48	32
<b>Cat. No.</b>	<b>5128</b>	<b>5128</b>	<b>5120</b>	<b>5136</b>	<b>5122</b>	<b>5124</b>	<b>5125</b>	<b>5126</b>	<b>1791</b>	<b>5138</b>	<b>5138</b>	<b>5138</b>	<b>5136</b>	<b>5120</b>	<b>5137</b>

<b>Vessels</b>																
capacity in ml	7.5-8.2	9-10	10	1.6-5	4-7	4-7	8.5-10	15	50	12	25	30	50	10	250	
Ø x L in mm	15x92	16x92	15x102	13x75	13x100	16x75	16x100	17x120	29x115	17x100	25x90	25x110	29x115	16 x 80	61 x 122	
max. RCF <sup>2)</sup>	2,952	2,952	2,952	2,540	3,005	2,952	2,952	3,095	3,095	3,005	2,826	2,898	3,023	2,952	3,095	
radius in mm	165	165	165	142	168	165	165	173	173	168	158	162	169	165	173	
<b>Cat. No.</b>	<b>blood collection / urine vessels</b>									<b>tubes with screw cap</b>						<b>5127<sup>24)</sup></b>

<b>Adapter</b>															
boring Ø x L in mm	17.5x56.7	17.5x56.7	17.5x56.7	12.8x54.5	13.2x79.5	17.5x56.7	17.5x56.7	17x85	30x85	17.5x85	26x73	25.5x75	30x99	17.5x57.7	62x90
vessels per rotor	32	32	32	48	48	32	32	28	8	28	12	16	8	32	4
<b>Cat. No.</b>	<b>5136</b>	<b>5136</b>	<b>5136</b>	<b>5138</b>	<b>5120</b>	<b>5136</b>	<b>5136</b>	<b>5129</b>	<b>5123</b>	<b>5121</b>	<b>5134</b>	<b>5122</b>	<b>5135</b>	<b>5136</b>	<b>6319</b>

1) Lowest attainable temperature in precooled refrigerated centrifuges at max. speed. Lower temperatures can be attained by reducing the speed.  
 2) Please note that the RCF values indicated refer only to rotor performance. The max. permissible RCF of tubes used should be verified with the individual manufacturers. The max. RCF for glass tubes annotated with footnote 2) is 4,000.  
 3.5) When using these tubes, bucket 5092 cannot be closed with lid 5053.  
 3.7) When using these tubes, bucket 4780 or 5051 cannot be closed with lid 4783 or 5053.  
 5) Tested by the TÜV in conformity with DIN EN 61010, section 2-020.  
 24) At temperatures of over +40 °C and / or when not filled to capacity, bottles may warp during centrifugation.

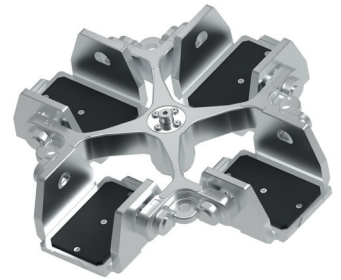
## SWING-OUT ROTOR, 4-PLACE | 4784-A



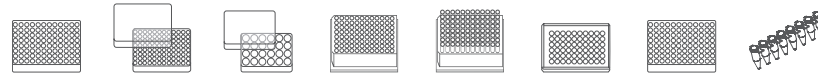
<b>Rotor</b>	
max. RPM   max. RCF	4,800 min <sup>-1</sup>   4,096
max. capacity	16 plates
run-up   run-down, braked in sec	54   38
angle   max. noise level	90°   56 dB (A)
temperature in °C <sup>1)</sup>	+4
<b>Cat. No.</b>	<b>4784-A</b>



<b>Bucket</b>	
<b>Cat. No.</b>	<b>4782</b>



### Plates



W x D x H in mm	128x86x15	128x86x17.5	128x86x22	128x86x44.5	128x86x46	84x59x11	124x82x20	-
capacity in ml	-	-	-	-	-	-	-	0,2
max. RCF <sup>2)</sup>	4,096	4,096	4,096	4,096	4,096	4,096	4,096	4,096
radius in mm	159	159	159	159	159	159	159	159
<b>Cat. No.</b>	<b>MTP</b>	<b>MTP</b>	<b>CP</b>	<b>DWP</b>	<b>MS</b>	<b>Microtest plate</b>	<b>PCR plate 96 wells</b>	<b>PCR strips</b>



### Adapter

boring Ø x L in mm	-	-	-	-	-	-	-	-
plates / strips per rotor	16	16	12	4	4	8	4	48 x 8
<b>Cat. No.</b>	<b>-</b>	<b>-</b>	<b>-</b>	<b>-</b>	<b>-</b>	<b>-</b>	<b>1485</b>	<b>1485</b>

## ANGLE ROTOR, 4-PLACE | 4795



<b>Rotor</b>	
max. RPM   max. RCF	9,500 min <sup>-1</sup>   12,007
max. capacity	4x250 ml
run-up   run-down, braked in sec	45   55
angle	25°
temperature in °C <sup>1)</sup>	+2
<b>Cat. No.</b>	<b>4795</b>



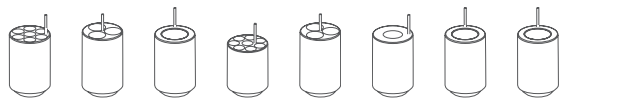
### Vessels



capacity in ml	15	25	94	10	30	50	85	85	250
Ø x L in mm	17x100	24x100	38x106	16x80	26x95	29x107	38 x 106	38 x 106	62 x 122
max. RCF <sup>2)</sup>	11,301	10,897	10,292	11,402	10,897	10,090	10,292	10,292	12,007
radius in mm	112	108	102	113	108	100	102	102	119
<b>Cat. No.</b>	<b>tubes<sup>2)</sup></b>			<b>tubes with screw cap</b>				<b>5127<sup>24)</sup></b>	



### Adapter



boring Ø x L in mm	17.6x83	26x80	38.6x88	16.6x70	26x80	29x90	38.6 x 88	38.6 x 88	61.5x109
vessels per rotor	28	12	4	32	12	4	4	4	4
<b>Cat. No.</b>	<b>5646</b>	<b>5642</b>	<b>5644</b>	<b>5641</b>	<b>5642</b>	<b>5643</b>	<b>5644</b>	<b>5644</b>	<b>-</b>

## — ANGLE ROTOR, 6-PLACE | 4794



### Rotor

max. RPM   max. RCF	11,000 min <sup>-1</sup>   16,504
max. capacity	6 x 94 ml
run-up   run-down, braked in sec	40   63
angle   max. noise level	45°   58 dB (A)
temperature in °C <sup>1)</sup>	+4
<b>Cat. No.</b>	<b>4794</b>



### Lid bioseal<sup>5)</sup>

<b>Cat. No.</b>	<b>INCLUSIVE</b>
-----------------	------------------



### Vessels

capacity in ml	1.5	2	3	6	15	25	50	85	94	7.5 – 8,2	9 – 10	10	8.5 – 10	5
Ø x L in mm	11 x 38	11 x 38	10 x 60	17 x 100	17 x 100	24 x 100	34 x 100	38 x 106	38 x 102	15 x 92	16 x 92	15 x 102	16 x 100	17 x 51
max. RCF <sup>2)</sup>	15,828	15,828	15,828	15,557	15,557	15,151	16,233	16,504	16,504	15,557	15,557	15,557	15,557	16,504
radius in mm	117	117	117	115	115	112	120	122	122	115	115	115	117	122
<b>Cat. No.</b>	<b>microliter tubes</b>			<b>tubes<sup>2)</sup></b>						<b>blood collection / urine vessels</b>				<b>-</b>



### Adapter

boring Ø x L in mm	11.4 x 39	11.4 x 39	11.4 x 39	17,5 x 91,5	17,5 x 91,5	26 x 85	35 x 89,3	38,2 x 89,6	38,2 x 89,6	17,5 x 91,5	17,5 x 91,5	17,5 x 91,5	17,5 x 91,5	17 x 51
vessels per rotor	24	24	24	6	6	6	6	6	6	6	6	6	6	6
<b>Cat. No.</b>	<b>1449</b>	<b>1449</b>	<b>1449</b>	<b>1451</b>	<b>1451</b>	<b>1447</b>	<b>1463</b>	<b>-</b>	<b>-</b>	<b>1451</b>	<b>1451</b>	<b>1451</b>	<b>1451</b>	<b>1476</b>

### Vessels

capacity in ml	4	15	20	10	30	50	85
Ø x L in mm	12 x 40	17 x 120	29 x 115	16 x 80	26 x 95	29 x 107	38 x 106
max. RCF <sup>2)</sup>	15,557	15,828	16,098	15,557	15,151	15,828	16,504
radius in mm	115	117	119	115	112	117	122
<b>Cat. No.</b>	<b>tubes with screw cap</b>						



### Adapter

boring Ø x L in mm	15,6 x 30	17 x 106	29,8 x 96,7	16,5 x 74	26 x 85	29 x 92	38,2 x 89,6
vessels per rotor	24	6	6	12	6	6	6
<b>Cat. No.</b>	<b>1403</b>	<b>1466</b>	<b>1454</b>	<b>1448</b>	<b>1447</b>	<b>1446</b>	<b>-</b>

1) For cooled versions: Lowest temperature achievable with precooling and max. speed.  
 2) Please note that the RCF values indicated refer only to rotor performance. The max. permissible RCF of tubes used should be verified with the individual manufacturers. The max. RCF for glass tubes annotated with footnote 2) is 4,000.  
 5) Tested by the TÜV in conformity with DIN EN 61010, section 2-020.

## — ANGLE ROTOR, 30-PLACE | 4790-A



**Rotor**

max. RPM   max. RCF	15,000 min <sup>-1</sup>   24,400
max. capacity	30 x 2 ml
run-up   run-down, braked in sec	19   24
angle   max. noise level	45°   50 dB (A)
temperature in °C <sup>1)</sup>	+4

**Cat. No.** 4790-A



Lid bioseal<sup>5)</sup>, phenol-resistant

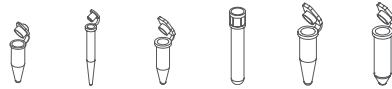
**Cat. No.**



**INCLUSIVE**



**Vessels**



capacity in ml	0.2	0.4	0.5	0.8	1.5	2
Ø x L in mm	6x18	6x45	8x30	8x45	11x38	11x38
max. RCF <sup>2)</sup>	24,400	24,400	24,400	24,400	24,400	24,400
radius in mm	97	97	97	97	97	97

**Cat. No.** microliter tubes



**Adapter**

boring Ø x L in mm	6x40	6x40	8x40	8x40	10.2x19.3	11.2x40.9
vessels per rotor	30	30	30	30	30	30

**Cat. No.** 2024 2024 2023 2023 2031<sup>7)</sup> -

- 1) For cooled versions: Lowest temperature achievable with precooling and max. speed.
- 2) Please note that the RCF values indicated refer only to rotor performance. The max. permissible RCF of tubes used should be verified with the individual manufacturers. The max. RCF for glass tubes annotated with footnote 2) is 4,000.
- 5) Tested by the TÜV in conformity with DIN EN 61010, section 2-020.



## CERTIFICATIONS / REGISTRATIONS

Product certification:



Product registration:

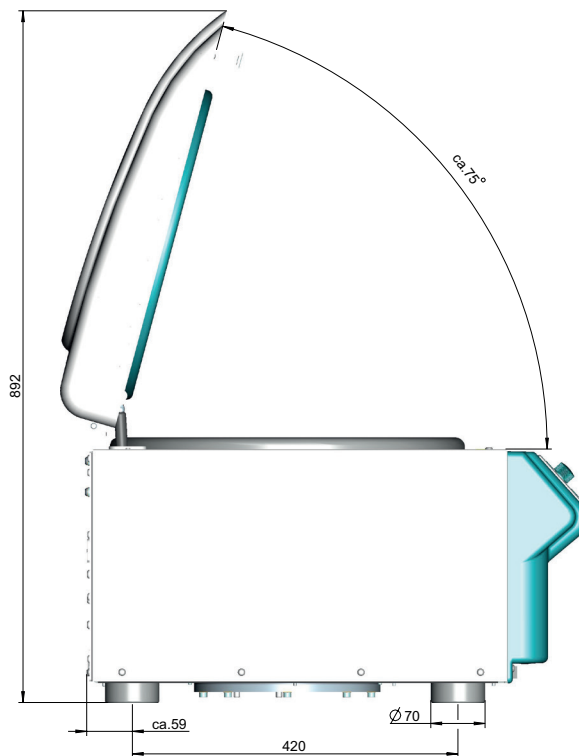


according to regulation (EU) 2017/746

Company certifications:



## DIMENSIONS | ROTINA 420



— DIMENSIONS | ROTINA 420 R

